

Hollis Brookline Cooperative School Board
Wednesday, September 12, 2018
Hollis Brookline Middle School Library
All times are estimates and subject to change without notice

- 6:00 Call to Order
- 6:05 Appointment of a process observer
Agenda adjustments
Approve meeting minutes
Nomination/ resignations/correspondence
- 6:10 Public Input
- 6:30 Principal Reports
- Youth risk behavior survey – High School Administration
 - Class sizes middle and high school administration
 - Enrollment update high school and middle school
- 7:40 Discussion
- Turf field update
 - STEM lab update
 - Transportation
- 8:15 Deliberations**
- To see what action the Board will take regarding Policy GDQA – Reduction in Support Staff Work Force – Second Reading
 - To see what action the Board will take regarding Policy IHAM – Health Education and Exemption from Instruction – Third Reading
 - To see what action the Board will take regarding the architectural proposal from Banwell with regards to the STEM lab
- 8:45 Non – Public Session
- 9:00 Motion to Adjourn

To: Andrew Corey

From: Rick Barnes

RE: September 5, 2018

Aside from the many days of hot and humid weather, the opening days of school have been a success in the classroom and on the playing fields/gym. Staff and students are to be commended for their professional attitude towards school and extracurricular activities as they forge ahead regardless of the temperatures.

Youth Risk Behavior Survey 2017 Results and Multi-Tiered Systems of Supports for Students: Attached you will find the executive summary of our results of our last survey. The document contains a summary and identified areas for improvement. Additionally, our new Assistant Principal of Student Services Mrs. DiGennaro will expand upon Mrs. Zeller's presentation from last year that referenced the MTSS. One particular area of focus of our MTSS will be how we respond to and support our students who struggle socially and emotionally as identified in the YRBS.

Section Enrollments: (See Attached)

Open House: We are excited to move forward with a new format for this event on September 13. Rather than move families through a fast paced seven period schedule, all staff will be assigned to a particular room where families can locate and interact with them at their own pace. Some clubs and activities will set up booths in the halls as well. We feel this better demonstrates all that our students and staff do together on a daily basis and look forward to building upon it year after year.

Respectfully Submitted,

Rick Barnes

Principal

Executive Summary of Results of 2017 Youth Risk Behavior Survey for HBHS

The Survey was administered to 687 or 83% of HBHS students during the 2016-17 school year. According to the New Hampshire Department of Education Website, “The YRBS is one component of the Youth Risk Behavior Surveillance System developed by the Centers for Disease Control and Prevention. This system was designed to focus the nation on behaviors among youth related to the leading causes of mortality and morbidity among both youth and adults and to assess how these risk behaviors change over time. The Youth Risk Behavior Surveillance System measures behaviors that fall into six categories: (1) behaviors that result in unintentional and intentional injuries and violence; (2) sexual behaviors that result in HIV infection, other sexually-transmitted diseases, use and unintended pregnancies; (3) Alcohol and other Drug use; (4) tobacco use; (5) unhealthy dietary behaviors; and (6) inadequate physical activity.”

Behaviors that Result in Unintentional and Intentional Injuries and Violence;

- **Summary**
 - The number and percent of students responding in the affirmative to the questions regarding suicide and self-harm was lower in every question. This is an improvement over the 2015 survey.
 - Number of students who report that they have texted while driving continues to decrease and remains below state and regional averages.
 - The number of students who did not come to school because they felt unsafe continues to decline and is below the state and regional average.
 - The number of students who report being bullied (not electronic) is comparable to state and regional averages.
- **Areas for Improvement**
 - The number and percent of students who ride with someone who had been drinking is slightly higher than state and regional levels.
 - While there have been significant declines in reported instances of sexual dating and violence, the numbers were slightly above the regional and state percentages in a few categories.
 - The number and percent of students being electronically bullied is slightly above state and regional averages at 22.4% versus 21.4 and 21.7 respectively. Appropriate use of social media should continue to be a focus.

Alcohol and other Drug Use

- **Summary**
 - Improvements in most drug and alcohol categories as compared to 2015 to include
 - Student marijuana use across all grades continues to decline and is significantly lower than the state and regional averages.
 - The number of students who drove when drinking remained at 4.7% which is in line with the state and region.
 - The number of students using prescription drugs illegally has declined significantly and is in line with state and regional averages.
 - The number of students who have obtained drugs on school property declined at a faster rate than state and regional averages.
 - The number of students who report negative perceptions around drug and alcohol use is significantly higher than regional and state averages.

- **Areas for Improvement**
 - The number of students who have ever used heroin dropped slightly to 2.1% but not at the same rate it has at the regional and state level. The regional level is 1.5% and the state average is 1.8%.
 - The number of students who have ever used methamphetamines dropped to 2.7 %. This is currently above the regional level of 1.7% and state level of 1.8%.

Sexual Behaviors that result in HIV infection, other sexually transmitted diseases, use and unintended pregnancies

Summary

- Number and percent of students is significantly lower in almost every category as compared to state and regional averages.

Areas for Improvement

- This is not a recommendation for improvement per se, but we should continue to enhance our existing Wellness program where it makes sense. These numbers demonstrate that the program is a valuable and necessary part of a student's experience at HBHS.

Tobacco Use

- **Summary**
 - Student tobacco, overall use is significantly lower in almost all categories.
- **Areas for Improvement**
 - However, those who do smoke, do so at significantly higher levels as compared to state and regional averages

Unhealthy Dietary Behaviors inadequate physical activity, and Other

- **Summary**
 - Number of students who did not get 8 or more hours of sleep was significantly higher than the state and regional average and rose slightly to 20.3% versus 25% and 22% respectively.
 - The number of students who play on at least one sports team the past 12 months is significantly higher than the state and regional average at 71.9% versus 61.5% and 60.8% respectively.
- **Areas For Improvement**
 - Continue to focus on meeting the social and emotional needs of all students to include subjects such as dealing with stress.



Student Supports:

Where we are and where we are going



Overview of MTSS

It's What We Do Everyday

MTSS - Multi Tiered System of Support - A Whole System Model

- MTSS provides specific types of support for teachers (professional development, technical assistance, etc) as well as students.
- MTSS outlines clearly defined roles and responsibilities for all stakeholders - teachers, building leaders, and administration.
- MTSS allows for common understanding and language to exist when discussing implementation and expected outcomes.



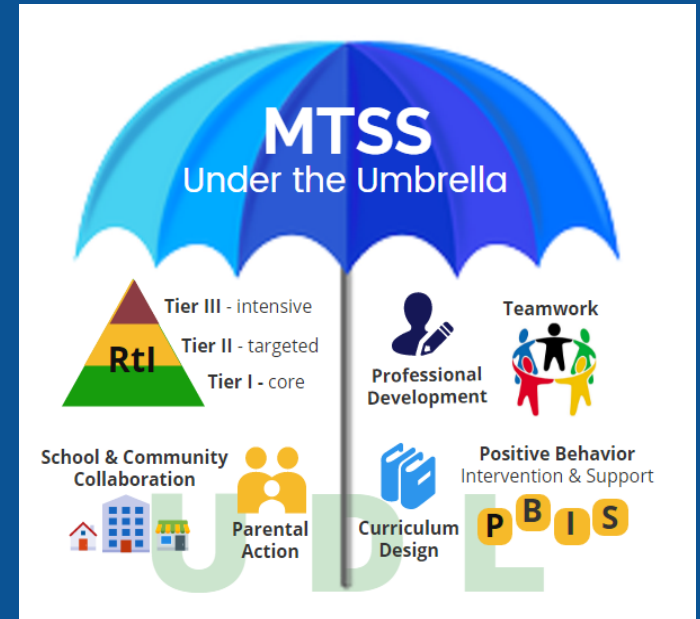


Overview of MTSS

MTSS provides for both academic and behavioral avenues. The integration of both is needed for student success in school.

MTSS can be thought of as an umbrella that covers many different approaches and interventions, including:

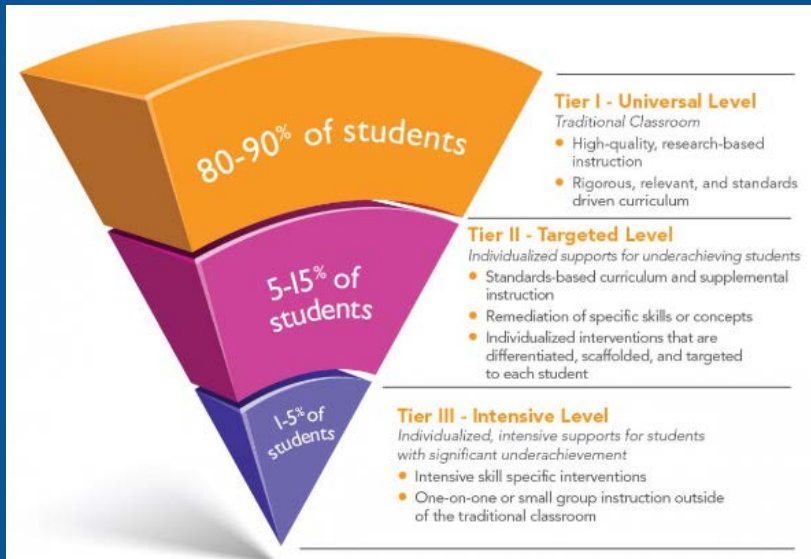
- Curriculum
- Positive behavior intervention and supports
- Teacher learning and collaboration
- Collaboration between school and family in problem-solving





How RTI Fits In

RTI is a structured, multi-tiered approach to help identify and support struggling students. It focuses on providing high-quality instruction and interventions, typically at three different levels.



Academic

Social/Emotional/Behavioral



Goal for the Year

GOAL: To be proactive

- RTI - Response to Intervention
 - Core (Formerly Tier 1) Supports
 - Targeted (Formerly Tier 2) Supports
 - Intensive (Formerly Tier 3) Supports
- Basic skill gaps vs. curriculum support
- Mental Health and Social/Emotional/Behavioral Supports
 - Tie in to SEL Committee work



Our Work This Year

Proactive work

Universal Screening Tools (9th and new students), Cavblock intervention design, progress monitoring, CHOICE protocols/procedures.

Decision making

Developing RTI teams and levels of supports for both avenues -

- What is included at each level of intervention? Who delivers interventions? What do we do already?
- Decision making procedures for students to move from Core to Targeted to Intensive interventions.

Roll out

Begin with 9th grade - skill need identification and proactive work in SEL

Begin discussions with middle school to work together to support students - especially in transition years.

How to utilize collaboration time and how to structure student support time - Creative and Flexible



Timeline

September

- Begin department discussions on learning outcomes and student needs by department.

October

- Explore targeted Cavblock scheduling (primarily 9th grade).

Ongoing: Sept- Dec

- Developing the system of supports at each level of intervention for both academic and social/emotional- Core, Targeted, Intensive.
- Working to identify best tools for data collection by department. Will include both in class data as well as diagnostic universal screeners to catch potential skill deficits.
- Developing meaningful interventions/progress monitoring to address student needs in a way that is relevant to their learning - academic and social/emotional/behavioral and as identified in the YRBS
- Determining the best way for HBHS to roll out interventions for 9th and possibly 10th grade.

Course Name	Expression	Term	Teacher Dept.	Room	Students	Max
Concert Band	5(B,E)	18-19	VisPerArts	329	32	35
U.S. History	2(A-E)	18-19	SocStu	275	28	25
U.S. History	4(A-E)	18-19	SocStu	273	28	25
Economics	4(A-E)	S2	SocStu	271	27	25
U.S. History	5(A-E)	18-19	SocStu	221	27	25
Algebra 2	4(A-E)	18-19	Math	323	26	25
Fitness	2(B,E)	18-19	PhysEd	Gym1	26	28
French III	1(A-E)	18-19	Wrld Lang	174	26	25
French III	2(A-E)	18-19	Wrld Lang	174	26	25
Honors Choir	4(A-E)	18-19	VisPerArts	361	26	30
Spanish I	4(A-E)	18-19	Wrld Lang	177	26	25
Spanish III	6(A-E)	18-19	Wrld Lang	177	26	25
U.S. History	3(A-E)	18-19	SocStu	271	26	25
U.S. History	7(A-E)	18-19	SocStu	275	26	25
Wellness	2(A,C-D)	18-19	PhysEd	362	26	28
Wellness	6(A,C-D)	18-19	PhysEd	362	26	28
Wellness	6(B,E)	18-19	PhysEd	362	26	28
World Studies	5(A-E)	18-19	SocStu	273	26	25
Accel English 10	4(A-E)	18-19	English	223	25	25
Algebra 1	6(A-E)	18-19	Math	323	25	25
Algebra 2	7(A-E)	18-19	Math	332	25	25
AP Statistics	6(A-E)	18-19	Math	327	25	25
AP World History	5(A-E)	18-19	SocStu	275	25	25
Civics	4(A-E)	S1	SocStu	271	25	25
Civics	1(A-E)	S1	SocStu	201	25	25
Civics	6(A-E)	S1	SocStu	201	25	25
Concert Choir	5(A,C-D)	18-19	VisPerArts	361	25	30
Economics	1(A-E)	S2	SocStu	203	25	25
Economics	2(A-E)	S2	SocStu	203	25	25
Economics	6(A-E)	S1	SocStu	271	25	25
English 10	2(A-E)	18-19	English	274	25	25
English 9	6(A-E)	18-19	English	222	25	25
English 9	4(A-E)	18-19	English	274	25	25
Film Studies	5(A-E)	S1	English	202	25	25
Fitness	6(A,C-D)	18-19	PhysEd	Gym1	25	30
Fitness	6(B,E)	18-19	PhysEd	Gym1	25	28
Geometry	6(A-E)	18-19	Math	318	25	25
Honors Literature	5(A-E)	S1	English	223	25	25
Memoirs & Biography	3(A-E)	S1	English	224	25	25

Outdoor Adventures	6(A-E)	S2	PhysEd	Gym1	25	28
Pre-Calculus	3(A-E)	18-19	Math	300	25	25
Pre-Calculus	6(A-E)	18-19	Math	300	25	25
Science Fiction	3(A-E)	S2	English	202	25	25
Spanish I	3(A-E)	18-19	Wrld Lang	177	25	25
Spanish I	5(A-E)	18-19	Wrld Lang	176	25	25
Spanish III	3(A-E)	18-19	Wrld Lang	175	25	25
Spanish IV	1(A-E)	18-19	Wrld Lang	177	25	25
Team & Ind Sports	1(A-E)	S1	PhysEd	Gym1	25	28
Team & Ind Sports	3(A-E)	S1	PhysEd	Gym1	25	28
U.S. History	1(A-E)	18-19	SocStu	276	25	26
U.S. History	7(A-E)	18-19	SocStu	221	25	25
U.S. History	1(A-E)	18-19	SocStu	273	25	25
Accel Biology	6(A-E)	18-19	Science	307	24	24
Accel Biology	5(A-E)	18-19	Science	309	24	24
Accel Biology	1(A-E)	18-19	Science	307	24	24
Accelerated Algebra 2	1(A-E)	18-19	Math	323	24	25
Algebra 1	5(A-E)	18-19	Math	300	24	25
Algebra 2	6(A-E)	18-19	Math	321	24	25
Algebra 2	1(A-E)	18-19	Math	332	24	25
AP English Language &	6(A-E)	18-19	English	248	24	25
AP Psychology	5(A-E)	18-19	SocStu	276	24	25
AP US Gov Pol	5(A-E)	18-19	SocStu	201	24	25
Biology	3(A-E)	18-19	Science	309	24	24
Chemistry	3(A-E)	18-19	Science	371	24	24
Chemistry	5(A-E)	18-19	Science	373	24	24
Chemistry	6(A-E)	18-19	Science	373	24	24
Civics	6(A-E)	S2	SocStu	201	24	25
Economics	6(A-E)	S2	SocStu	271	24	25
English 10	4(A-E)	18-19	English	202	24	25
English 9	4(A-E)	18-19	English	221	24	25
English 9	1(A-E)	18-19	English	274	24	25
Film Studies	1(A-E)	S2	English	202	24	25
Fitness	2(A,C-D)	18-19	PhysEd	Gym1	24	28
French II	2(A-E)	18-19	Wrld Lang	171	24	25
Geometry	2(A-E)	18-19	Math	327	24	25
Honors Anatomy &	7(A-E)	18-19	Science	307	24	24
Honors Chemistry	2(A-E)	18-19	Science	304	24	24
Honors Chemistry	5(A-E)	18-19	Science	304	24	24
Honors Chemistry	6(A-E)	18-19	Science	304	24	24

Honors Literature	2(A-E)	S2	English	223	24	25
Honors U.S. Literature	2(A-E)	18-19	English	222	24	25
Latin I	7(A-E)	18-19	Wrld Lang	177	24	27
Memoirs & Biography II	6(A-E)	S2	English	224	24	25
Outdoor Adventures	4(A-E)	S2	PhysEd	Gym1	24	28
Personal Fitness	6(A-E)	S1	PhysEd	Gym1	24	28
Physical Science with Earth	4(A-E)	18-19	Science	373	24	24
Physical Science with Earth	1(A-E)	18-19	Science	371	24	24
Physical Science with Earth	2(A-E)	18-19	Science	373	24	24
Pre-Calculus	4(A-E)	18-19	Math	300	24	25
Spanish II	2(A-E)	18-19	Wrld Lang	176	24	25
Spanish III	7(A-E)	18-19	Wrld Lang	175	24	25
U.S. Literature	7(A-E)	18-19	English	223	24	25
Wellness	2(B,E)	18-19	PhysEd	362	24	25
Accel English 9	6(A-E)	18-19	English	274	23	25
Accelerated Algebra 2	3(A-E)	18-19	Math	323	23	25
Algebra 1	1(A-E)	18-19	Math	318	23	25
AP Environmental Science	2(A-E)	18-19	Science	309	23	24
Biology	5(A-E)	18-19		374	23	24
Calculus	4(A-E)	18-19	Math	318	23	25
Chemistry	2(A-E)	18-19	Science	371	23	24
Civics	2(A-E)	S1	SocStu	271	23	25
Concert Band	2(B,E)	18-19	VisPerArts	329	23	35
English 10	3(A-E)	18-19	English	222	23	25
French IV	7(A-E)	18-19	Wrld Lang	174	23	25
Geometry	1(A-E)	18-19	Math	317	23	25
Honors Literature	2(A-E)	S1	English	223	23	25
Honors Literature	6(A-E)	S2	English	223	23	25
Latin II	1(A-E)	18-19	Wrld Lang	171	23	25
Memoirs & Biography	6(A-E)	S1	English	224	23	25
Physics: Conceptual	4(A-E)	18-19	Science	301	23	24
World Studies	1(A-E)	18-19	SocStu	275	23	25
Accel Biology	2(A-E)	18-19	Science	374	22	24
Advanced Writing	2(A-E)	S1	English	248	22	22
Algebra 1	7(A-E)	18-19	Math	300	22	25
AP Chemistry	1(A-E)	18-19	Science	373	22	24
AP English Language &	3(A-E)	18-19	English	225	22	25
AP Physics I	4(A-E)	18-19	Science	304	22	24
AP Physics I	5(A-E)	18-19	Science	301	22	24
AP Psychology	7(A-E)	18-19	SocStu	276	22	25

AP Psychology	3(A-E)	18-19	SocStu	221	22	25
Chemistry and Society	5(A-E)	18-19	Science	371	22	24
English 10	7(A-E)	18-19	English	202	22	25
English 10	4(A-E)	18-19	English	222	22	25
English 9	3(A-E)	18-19	English	223	22	25
Film Studies	6(A-E)	S2	English	202	22	25
Fundamentals of Art	3(A-E)	S1	VisPerArts	163	22	22
Fundamentals of Art	5(A-E)	S2	VisPerArts	170	22	22
Fundamentals of Art	4(A-E)	S1	VisPerArts	163	22	22
Geometry	1(A-E)	18-19	Math	327	22	25
Honors Literature	5(A-E)	S2	English	223	22	25
Honors Pre-Calc	3(A-E)	18-19	Math	321	22	25
Honors Spanish IV	1(A-E)	18-19	Wrld Lang	176	22	25
Honors U.S. Literature	1(A-E)	18-19	English	222	22	25
Memoirs & Biography	5(A-E)	S1	English	224	22	25
Memoirs & Biography II	5(A-E)	S2	English	224	22	25
Physical Education	4(A-E)	S1	PhysEd	Gym1	22	28
Physical Science with Earth	1(A-E)	18-19	Science	374	22	24
Physical Science with Earth	7(A-E)	18-19	Science	373	22	24
Psychology	3(A-E)	18-19	SocStu	276	22	25
World Studies	4(A-E)	18-19	SocStu	275	22	25
Writing	1(A-E)	S1	English	202	22	22
Writing	6(A-E)	S1	English	216	22	22
Writing	4(A-E)	S2	English	216	22	22
Writing	6(A-E)	S2	English	216	22	22
Writing	3(A-E)	S2	English	248	22	22
Writing	2(A-E)	S2	English	248	22	22
Accel English 10	2(A-E)	18-19	English	225	21	25
Anatomy & Physiology I	5(A-E)	S1	Science	307	21	24
Biology	4(A-E)	18-19	Science	374	21	24
Biology	6(A-E)	18-19	Science	309	21	24
Civics	2(A-E)	S1	SocStu	201	21	25
English 9	7(A-E)	18-19	English	222	21	25
French I	6(A-E)	18-19	Wrld Lang	174	21	25
Fundamentals of Art	5(A-E)	S1	VisPerArts	170	21	22
Honors Jazz Band	4(A-E)	18-19	VisPerArts	329	21	30
Intro to Graphic Arts	5(A-E)	S2	VisPerArts	141	21	21
Outdoor Adventures	3(A-E)	S2	PhysEd	Gym1	21	28
Personal Finance	5(A-E)	S2	Comp&Tech	217	21	21
Physical Science with Earth	3(A-E)	18-19	Science	374	21	24

Psychology	2(A-E)	18-19	SocStu	276	21	25
Spanish II	6(A-E)	18-19	Wrld Lang	175	21	25
Algebra 1	3(A-E)	18-19	Math	332	20	25
Anatomy & Physiology II	5(A-E)	S2	Science	307	20	24
AP Biology	2(A-E)	18-19	Science	307	20	24
AP Physics I	1(A-E)	18-19	Science	304	20	24
AP World History	3(A-E)	18-19	SocStu	273	20	25
AP World History	6(A-E)	18-19	SocStu	273	20	25
Contemporary Issues	3(A-E)	S1	SocStu	201	20	25
Economics	1(A-E)	S1	SocStu	203	20	25
Fitness	3(A-B,D)	18-19	PhysEd	Gym1	20	28
Fitness	5(B,E)	18-19	PhysEd	Gym1	20	28
Fundamentals of Art	1(A-E)	S2	VisPerArts	170	20	22
Geometry	7(A-E)	18-19	Math	318	20	25
Honors Literature	6(A-E)	S1	English	223	20	25
Honors Spanish IV	7(A-E)	18-19	Wrld Lang	176	20	25
Physical Science with Earth	3(A-E)	18-19	Science	373	20	24
Physics: Princ. & Problems	1(A-E)	18-19	Science	301	20	24
Pre-Calculus	1(A-E)	18-19	Math	300	20	25
Sociology	6(A-E)	S1	SocStu	276	20	25
Wellness	3(A-B,D)	18-19	PhysEd	362	20	28
Wellness	3(C,E)	18-19	PhysEd	362	20	28
World Studies	2(A-E)	18-19	SocStu	273	20	25
World Studies	3(A-E)	18-19	SocStu	275	20	25
AP English Language &	7(A-E)	18-19	English	225	19	25
Biology	7(A-E)	18-19	Science	309	19	24
Calculus	3(A-E)	18-19	Math	318	19	25
Civics	1(A-E)	S2	SocStu	271	19	25
Civics	2(A-E)	S2	SocStu	201	19	25
Film Studies	6(A-E)	S1	English	202	19	25
Fitness	3(C,E)	18-19	PhysEd	Gym1	19	28
Fitness	7(A-B,D)	18-19	PhysEd	Gym1	19	28
French I	3(A-E)	18-19	Wrld Lang	174	19	25
Fundamentals of Art	6(A-E)	S1	VisPerArts	163	19	22
Fundamentals of Art	7(A-E)	S1	VisPerArts	163	19	22
Geometry	7(A-E)	18-19	Math	327	19	25
Honors Chemistry	3(A-E)	18-19	Science	304	19	24
Latin I	4(A-E)	18-19	Wrld Lang	175	19	27
Personal Finance	7(A-E)	S2	Comp&Tech	217	19	21
Physical Education	1(A-E)	S2	PhysEd	Gym1	19	28

Spanish II	5(A-E)	18-19	Wrld Lang	175	19	25
Spanish II	1(A-E)	18-19	Wrld Lang	175	19	25
U.S. Literature	2(A-E)	18-19	English	224	19	25
Wellness	7(C,E)	18-19	PhysEd	362	19	28
World Studies	7(A-E)	18-19	SocStu	273	19	25
Writing	3(A-E)	S2	English	224	19	22
Writing	3(A-E)	S1	English	248	19	22
Accel English 10	5(A-E)	18-19	English	274	18	25
AP Psychology	2(A-E)	18-19	SocStu	221	18	25
AP U.S. History	5(A-E)	18-19	SocStu	203	18	25
Computers & Technology	4(A-E)	S2	Comp&Tech	372	18	20
Contemporary Issues	3(A-E)	S2	SocStu	201	18	25
Drawing 1	1(A-E)	S1	VisPerArts	170	18	18
Economics	5(A-E)	S1	SocStu	271	18	25
Human Geography	2(A-E)	S2	SocStu	271	18	25
Spanish II	3(A-E)	18-19	Wrld Lang	176	18	25
Web Page Design	2(A-E)	S2	Comp&Tech	217	18	21
Wellness	5(A,C-D)	18-19	PhysEd	362	18	28
Accel English 10	7(A-E)	18-19	English	274	17	25
Accel English 9	7(A-E)	18-19	English	224	17	25
Accel Geometry	2(A-E)	18-19	Math	332	17	25
AP Calculus	3(A-E)	18-19	Math	317	17	25
Calculus	2(A-E)	18-19	Math	300	17	25
Economics	3(A-E)	S1	SocStu	203	17	25
Fitness	5(A,C-D)	18-19	PhysEd	Gym1	17	28
French II	7(A-E)	18-19	Wrld Lang	171	17	25
Intro to Graphic Arts	6(A-E)	S2	VisPerArts	141	17	21
Legal Studies	7(A-E)	S2	SocStu	203	17	25
Personal Fitness	7(A-E)	S2	PhysEd	Gym1	17	28
Photo 1	7(A-E)	S2	VisPerArts	163	17	18
Physics: Conceptual	6(A-E)	18-19	Science	374	17	24
Running Start Algebra 2	4(A-E)	18-19	Math	317	17	17
U.S. Literature	4(A-E)	18-19	English	224	17	25
Video Game Design	2(A-E)	S1	Comp&Tech	217	17	20
Wellness	5(B,E)	18-19	PhysEd	362	17	28
Accel Geometry	5(A-E)	18-19	Math	332	16	25
Acting I	2(A-E)	S1	VisPerArts	361	16	25
AP Computer Science	3(A-E)	18-19	Comp&Tech	217	16	21
AP Eng Lit & Comp	1(A-E)	18-19	English	216	16	25
AP Physics I	6(A-E)	18-19	Science	301	16	24

AP Physics II	7(A-E)	18-19	Science	301	16	24
Ceramics	2(A-E)	S2	VisPerArts	170	16	18
Ceramics	3(A-E)	S2	VisPerArts	170	16	18
Fitness	7(C,E)	18-19	PhysEd	Gym1	16	28
Foods & Nutri 1	4(A-E)	S1	FACS	158	16	16
French II	5(A-E)	18-19	Wrld Lang	171	16	25
Human Geography	1(A-E)	S1	SocStu	271	16	25
PLTW Principles of	2(A-E)	18-19	Engineering	372	16	20
Senior Quest	6(A-E)	18-19	SocStu	275	16	30
U.S. Literature	3(A-E)	18-19	English	274	16	25
Wellness	7(A-B,D)	18-19	PhysEd	362	16	28
Algebra 1A	4(A-E)	18-19	Math	321	15	15
Biology	1(A-E)	18-19	Science	309	15	24
Chemistry and Society	4(A-E)	18-19	Science	371	15	24
Civics	1(A-E)	S2	SocStu	201	15	25
Economics	7(A-E)	S1	SocStu	203	15	25
Foods & Nutri 1	5(A-E)	S1	FACS	158	15	16
General Geometry	6(A-E)	18-19	Math	317	15	17
Guitar	7(A-E)	S1	VisPerArts	329	15	20
Human Geography	5(A-E)	S2	SocStu	271	15	25
Painting	4(A-E)	S1	VisPerArts	170	15	20
Running Start Alg 3/Trig	4(A-E)	18-19	Math	332	15	20
Running Start Alg 3/Trig	2(A-E)	18-19	Math	318	15	20
Running Start Algebra 2	5(A-E)	18-19	Math	321	15	17
U.S. Literature	1(A-E)	18-19	English	224	15	25
Video Game Design	7(A-E)	S1	Comp&Tech	217	15	20
Algebra 1B	5(A-E)	18-19	Math	323	14	15
AP French	3(A-E)	18-19	Wrld Lang	171	14	25
Foods & Nutri 1	3(A-E)	S2	FACS	158	14	16
Foods & Nutri 1	6(A-E)	S2	FACS	158	14	16
Honors Pre-Calc	7(A-E)	18-19	Math	321	14	25
Jazz Band	5(A,C-D)	18-19	VisPerArts	329	14	30
World Literature - RS	3(A-E)	S2	English	216	14	15
Writing	7(A-E)	S1	English	216	14	22
Writing	7(A-E)	S1	English	248	14	22
College Composition	7(A-E)	S2	English	216	13	22
Dance, Movement & Music	3(A-E)	S1	VisPerArts	361	13	25
General Geometry	2(A-E)	18-19	Math	317	13	17
General Science with Earth	3(A-E)	18-19	Science	301	13	15
Photo 1	1(A-E)	S2	VisPerArts	163	13	18

Physics: Princ. & Problems	7(A-E)	18-19	Science	374	13	24
Running Start Alg 3/Trig	5(A-E)	18-19	Math	318	13	20
Writing	2(A-E)	S1	English	216	13	22
AP Spanish	4(A-E)	18-19	Wrld Lang	176	12	25
Foods & Nutri 2	3(A-E)	S1	FACS	158	12	16
Honors French IV	4(A-E)	18-19	Wrld Lang	171	12	25
Human Relations	4(A-E)	S2	FACS	158	12	22
Intro to Modern Languages	5(A-E)	18-19	Wrld Lang	177	12	15
Journalism 1	4(A-E)	S1	English	141	12	15
PLTW Intro to Engineering	6(A-E)	18-19	Engineering	372	12	20
Sociology	4(A-E)	S2	SocStu	276	12	25
World Literature	3(A-E)	S1	English	216	12	25
Accel English 9	1(A-E)	18-19	English	221	11	25
AP Calculus	5(A-E)	18-19	Math	317	11	25
AP Computer Science	4(A-E)	18-19	Comp&Tech	217	11	21
Computer Science Principles	5(A-E)	S1	Comp&Tech	217	11	20
Dance, Movement & Music	6(A-E)	S2	VisPerArts	361	11	25
Drawing 1	6(A-E)	S1	VisPerArts	170	11	18
Intro to Modern Languages	2(A-E)	18-19	Wrld Lang	175	11	15
Psychology	6(A-E)	18-19	SocStu	203	11	25
Algebra 1A	1(A-E)	18-19	Math	321	10	15
English 10 Read	2(A-E)	18-19	English	202	10	15
Improv Theatre	7(A-E)	18-19	VisPerArts	361	10	25
Journalism 1	4(A-E)	S2	English	141	10	15
Journalism 2	4(A-E)	S2	English	141	10	10
Painting	7(A-E)	S1	VisPerArts	170	10	20
Algebra 1B	4(A-E)	18-19	Math	327	9	15
Algebra 1B	2(A-E)	18-19	Math	323	9	15
Drawing 2	6(A-E)	S2	VisPerArts	170	9	18
English 9 Read	6(A-E)	18-19	English	221	9	15
Fund English	1(A-E)	18-19	English	225	9	15
Interior Decorating	1(A-E)	S1	FACS	158	9	22
Life Science	3(A-E)	18-19	Science	307	9	15
Personal Fitness	7(A-E)	S1	PhysEd	Gym1	9	28
PLTW Principles of	7(A-E)	18-19	Engineering	372	9	20
English 9 Read	5(A-E)	18-19	English	216	8	15
Fashion & Retail	1(A-E)	S2	FACS	158	8	22
Jazz Band	2(A,C-D)	18-19	VisPerArts	329	8	30
Jazz Choir	5(B,E)	18-19	VisPerArts	361	8	28
PLTW Digital Electronics	5(A-E)	18-19	Engineering	372	8	17

Robotics 1	1(A-E)	S1	Engineering	372	8	20
Topics in Civics	7(A-E)	S1	SocStu	271	8	15
Topics in Economics	7(A-E)	S2	SocStu	271	8	15
Foods & Nutri 1	6(A-E)	S1	FACS	158	7	16
Photo 2	3(A-E)	S2	VisPerArts	163	7	18
Topics in World Studies	4(A-E)	18-19	SocStu	203	7	15
Guitar II	1(A-E)	S2	VisPerArts	361	6	15
Music Th & Comp 1	7(A-E)	S2	VisPerArts	329	6	25
Photo 1	1(A-E)	S1	VisPerArts	163	6	18
Poetry	4(A-E)	S2	English	248	6	25
Popular Reading	1(A-E)	S2	English	223	6	15
Individual Math	5(A-E)	18-19	Math	327	5	10
Popular Reading	1(A-E)	S1	English	223	5	15
Topics in US History	7(A-E)	18-19	SocStu	201	5	15
Chemistry Essentials	6(A-E)	18-19	Science	371	4	15
Essentials for Algebra	4(A-E)	18-19	Math	322	4	15
Foods & Nutri 2	7(A-E)	S2	FACS	158	4	16

To: Hollis Brookline Cooperative School Board
From: Bob Thompson, Principal HBMS
Re: Principal's Report
Date: September 12, 2018

INFORMATION ONLY



Opening Days of School- Our registration day on August 23rd was very successful as we had approximately 85% of our students come to school that day to receive their schedule, tryout their locker, tour the building and have their school picture taken. Our opening weeks of school went very smoothly. We are looking forward to a great school year.

New School Sign- After going through several approvals with the Town of Hollis, Hollis Brookline Middle School finally has a new sign on Main Street. The sign was designed and created by Classic Signs. Classic Signs is responsible for designing most of the signs that are located within the Hollis Historic District.

ROCK- In the spring, the HBMS Instructional Leadership Team began working on a revision to our advisory curriculum known as ROCK. Many of these changes were put into effect for the start of the 2018-2019 school year. Some of the changes include; moving Silent Sustained Reading (SSR) out of ROCK and adding it to skills and core classes, placing a greater emphasis on relationship building and incorporating more Social Emotional Learning (SEL). Along with these changes we are looking to increase student voice and allow them the opportunity to participate in some of the planning.

Washington, D.C. - This year's 8th Grade Washington, D.C. trip will take place from Tuesday, March 26th through Friday, March 29th. The approximate cost of the trip is \$775 dollars. Scholarships are available to families who may have a financial need. Information regarding to the trip will be presented to parents at 8th Grade Open House Night.

Calendar of Events:

September 12th- HBMS PTSA (8:30 a.m.)

September 17th- 7th Grade Open House

September 20th - 8th Grade Open House
October 26th – School Dance

Follow HBMS:

Twitter: @HBmiddleschool

Facebook: @hollisbrooklinemiddleschool

Instagram: hollisbrookline_middleschool

Class	Quarter	Teacher	Size
Advanced Algebra 1	18-19	Hall, Katrina	25
Advanced Algebra 1	18-19	Marquette, Patricia	27
Art 7	Q4	Ouellette, Lynne G	17
Art 7	Q4	Ouellette, Lynne G	19
Art 7	Q4	Ouellette, Lynne G	18
Art 7	Q4	Ouellette, Lynne G	18
Art 7	Q4	Ouellette, Lynne G	15
Art 7	Q3	Ouellette, Lynne G	17
Art 7	Q3	Ouellette, Lynne G	19
Art 7	Q3	Ouellette, Lynne G	16
Art 7	Q3	Ouellette, Lynne G	14
Art 7	Q3	Ouellette, Lynne G	19
Art 8	Q2	Ouellette, Lynne G	21
Art 8	Q2	Ouellette, Lynne G	22
Art 8	Q2	Ouellette, Lynne G	19
Art 8	Q2	Ouellette, Lynne G	24
Art 8	Q2	Ouellette, Lynne G	23
Art 8	Q1	Ouellette, Lynne G	24
Art 8	Q1	Ouellette, Lynne G	23
Art 8	Q1	Ouellette, Lynne G	18
Art 8	Q1	Ouellette, Lynne G	21
Art 8	Q1	Ouellette, Lynne G	19
Band 7	18-19	Nault, Elisabeth M	15
Band 7	18-19	Nault, Elisabeth M	14
Band 8	18-19	Nault, Elisabeth M	15
Band 8	18-19	Nault, Elisabeth M	20
Chorus 7	18-19	Spencer, Nancy	13
Chorus 7	18-19	Spencer, Nancy	14
Chorus 7	18-19	Spencer, Nancy	12
Chorus 8	18-19	Spencer, Nancy	30
Chorus 8	18-19	Spencer, Nancy	19
Chorus 8	18-19	Spencer, Nancy	18
Chorus 8	18-19	Spencer, Nancy	14
Computer 7	Q2	Gruce, Joseph	17
Computer 7	Q2	Gruce, Joseph	19
Computer 7	Q2	Gruce, Joseph	19
Computer 7	Q2	Gruce, Joseph	17
Computer 7	Q2	Gruce, Joseph	15
Computer 7	Q1	Gruce, Joseph	16
Computer 7	Q1	Gruce, Joseph	19
Computer 7	Q1	Gruce, Joseph	14
Computer 7	Q1	Gruce, Joseph	14
Computer 7	Q1	Gruce, Joseph	18
Computer 8	Q3	Gruce, Joseph	20
Computer 8	Q3	Gruce, Joseph	21
Computer 8	Q3	Gruce, Joseph	19

Computer 8	Q3	Gruce, Joseph	23
Computer 8	Q3	Gruce, Joseph	24
Computer 8	Q4	Gruce, Joseph	24
Computer 8	Q4	Gruce, Joseph	22
Computer 8	Q4	Gruce, Joseph	23
Computer 8	Q4	Gruce, Joseph	23
Computer 8	Q4	Gruce, Joseph	19
English 7	18-19	DiZazzo, Lynn	17
English 7	18-19	DiZazzo, Lynn	19
English 7	18-19	DiZazzo, Lynn	18
English 7	18-19	DiZazzo, Lynn	18
English 7	18-19	DiZazzo, Lynn	15
English 7	18-19	Chase, Amy	18
English 7	18-19	Chase, Amy	16
English 7	18-19	Chase, Amy	17
English 7	18-19	Chase, Amy	17
English 7	18-19	Chase, Amy	15
English 8	18-19	Elliott, Kerbert	21
English 8	18-19	Elliott, Kerbert	24
English 8	18-19	Elliott, Kerbert	18
English 8	18-19	Elliott, Kerbert	16
English 8	18-19	Elliott, Kerbert	20
English 8	18-19	MacLeod, Jennifer Klauber	22
English 8	18-19	MacLeod, Jennifer Klauber	21
English 8	18-19	MacLeod, Jennifer Klauber	20
English 8	18-19	MacLeod, Jennifer Klauber	19
English 8	18-19	MacLeod, Jennifer Klauber	23
French 7	18-19	Barrett, Jessica E	23
French 7	18-19	Barrett, Jessica E	22
French 8	18-19	Barrett, Jessica E	28
French 8	18-19	Barrett, Jessica E	22
French 8	18-19	Barrett, Jessica E	28
General Music 7	18-19	Nault, Elisabeth M	19
General Music 7	18-19	Spencer, Nancy	16
General Music 7	18-19	Spencer, Nancy	15
General Music 7	18-19	Nault, Elisabeth M	17
General Music 7	18-19	Nault, Elisabeth M	12
General Music 8	18-19	Nault, Elisabeth M	21
General Music 8	18-19	Nault, Elisabeth M	23
General Music 8	18-19	Nault, Elisabeth M	19
General Music 8	18-19	Spencer, Nancy	15
Health 7	Q3	White, Erin	17
Health 7	Q3	White, Erin	19
Health 7	Q3	White, Erin	18
Health 7	Q3	White, Erin	18
Health 7	Q3	White, Erin	15
Health 7	Q4	White, Erin	16

Health 7	Q4	White, Erin	19
Health 7	Q4	White, Erin	17
Health 7	Q4	White, Erin	14
Health 7	Q4	White, Erin	18
Health 8	Q1	White, Erin	22
Health 8	Q1	White, Erin	22
Health 8	Q1	White, Erin	15
Health 8	Q1	White, Erin	21
Health 8	Q1	White, Erin	21
Health 8	Q2	White, Erin	24
Health 8	Q2	White, Erin	23
Health 8	Q2	White, Erin	23
Health 8	Q2	White, Erin	23
Health 8	Q2	White, Erin	19
IMP Math	18-19	Ball, Dorothy	6
Lunch	18-19	Gershgorin, Leonid	171
Lunch	18-19	Thompson, Robert	221
Math 7	18-19	Swanson, Carol A	17
Math 7	18-19	Swanson, Carol A	14
Math 7	18-19	Swanson, Carol A	16
Math 7	18-19	Swanson, Carol A	13
Math 7	18-19	Werne, Kirsten	14
Math 7	18-19	Werne, Kirsten	14
Math 7	18-19	Werne, Kirsten	15
Math 7 Pre-Algebra	18-19	Swanson, Carol A	22
Math 7 Pre-Algebra	18-19	Werne, Kirsten	20
Math 7 Pre-Algebra	18-19	Werne, Kirsten	19
Math 8	18-19	Hall, Katrina	20
Math 8	18-19	Hall, Katrina	18
Math 8	18-19	Hall, Katrina	18
Math 8	18-19	Hall, Katrina	16
Math 8	18-19	Marquette, Patricia	18
Math 8	18-19	Marquette, Patricia	19
Math 8	18-19	Marquette, Patricia	20
Math 8	18-19	Marquette, Patricia	20
Physical Education 7	18-19	Simo, Alexander	14
Physical Education 7	18-19	Simo, Alexander	18
Physical Education 7	18-19	Simo, Alexander	15
Physical Education 7	18-19	Simo, Alexander	21
Physical Education 7	18-19	Simo, Alexander	14
Physical Education 7	18-19	Simo, Alexander	17
Physical Education 7	18-19	Simo, Alexander	16
Physical Education 7	18-19	Simo, Alexander	21
Physical Education 7	18-19	Simo, Alexander	14
Physical Education 7	18-19	Simo, Alexander	13
Physical Education 8	18-19	Buschmann, Allison	18
Physical Education 8	18-19	Buschmann, Allison	23

Physical Education 8	18-19	Buschmann, Allison	21
Physical Education 8	18-19	Buschmann, Allison	24
Physical Education 8	18-19	Buschmann, Allison	23
Physical Education 8	18-19	Buschmann, Allison	22
Physical Education 8	18-19	Buschmann, Allison	23
Physical Education 8	18-19	Buschmann, Allison	18
Physical Education 8	18-19	Buschmann, Allison	18
Physical Education 8	18-19	Buschmann, Allison	23
Reading 7	18-19	Gershgorin, Leonid	10
Reading 7	18-19	Gershgorin, Leonid	10
Reading 7	18-19	Gershgorin, Leonid	13
Reading 8	18-19	Coutu, Karen E	9
Reading 8	18-19	Coutu, Karen E	8
Reading 8	18-19	Coutu, Karen E	14
Science 7	18-19	Williamson, Katherine E	19
Science 7	18-19	Williamson, Katherine E	17
Science 7	18-19	Williamson, Katherine E	17
Science 7	18-19	Williamson, Katherine E	18
Science 7	18-19	Williamson, Katherine E	16
Science 7	18-19	Ellerin, Janice	17
Science 7	18-19	Ellerin, Janice	19
Science 7	18-19	Ellerin, Janice	16
Science 7	18-19	Ellerin, Janice	15
Science 7	18-19	Ellerin, Janice	16
Science 8	18-19	Moore, Courtney	22
Science 8	18-19	Moore, Courtney	22
Science 8	18-19	Moore, Courtney	22
Science 8	18-19	Moore, Courtney	21
Science 8	18-19	Moore, Courtney	21
Science 8	18-19	Minott, George L	22
Science 8	18-19	Minott, George L	22
Science 8	18-19	Minott, George L	20
Science 8	18-19	Minott, George L	19
Science 8	18-19	Minott, George L	23
Social Studies 7	18-19	Connelly, Susan	17
Social Studies 7	18-19	Connelly, Susan	18
Social Studies 7	18-19	Connelly, Susan	17
Social Studies 7	18-19	Connelly, Susan	20
Social Studies 7	18-19	Connelly, Susan	15
Social Studies 7	18-19	Capraro, Stephen	17
Social Studies 7	18-19	Capraro, Stephen	15
Social Studies 7	18-19	Capraro, Stephen	19
Social Studies 7	18-19	Capraro, Stephen	18
Social Studies 7	18-19	Capraro, Stephen	14
Social Studies 8	18-19	Saucier, Pamela L	21
Social Studies 8	18-19	Saucier, Pamela L	20
Social Studies 8	18-19	Saucier, Pamela L	19

Social Studies 8	18-19	Saucier, Pamela L	17
Social Studies 8	18-19	Saucier, Pamela L	22
Social Studies 8	18-19	DeRosa, Laura	21
Social Studies 8	18-19	DeRosa, Laura	24
Social Studies 8	18-19	DeRosa, Laura	19
Social Studies 8	18-19	DeRosa, Laura	19
Social Studies 8	18-19	DeRosa, Laura	21
Spanish 7	18-19	Lash, Janet	14
Spanish 7	18-19	Lash, Janet	21
Spanish 7	18-19	Banks, Claudia	16
Spanish 7	18-19	Banks, Claudia	12
Spanish 7	18-19	Banks, Claudia	17
Spanish 8	18-19	Lash, Janet	13
Spanish 8	18-19	Banks, Claudia	23
Spanish 8	18-19	Lash, Janet	25
Spanish 8	18-19	Banks, Claudia	13
Spanish 8	18-19	Lash, Janet	20
Tech Ed 7	Q1	Picariello, Paul	17
Tech Ed 7	Q1	Picariello, Paul	19
Tech Ed 7	Q1	Picariello, Paul	18
Tech Ed 7	Q1	Picariello, Paul	14
Tech Ed 7	Q1	Picariello, Paul	19
Tech Ed 7	Q2	Picariello, Paul	17
Tech Ed 7	Q2	Picariello, Paul	19
Tech Ed 7	Q2	Picariello, Paul	16
Tech Ed 7	Q2	Picariello, Paul	14
Tech Ed 7	Q2	Picariello, Paul	19
Tech Ed 8	Q4	Picariello, Paul	20
Tech Ed 8	Q4	Picariello, Paul	21
Tech Ed 8	Q4	Picariello, Paul	20
Tech Ed 8	Q4	Picariello, Paul	21
Tech Ed 8	Q4	Picariello, Paul	23
Tech Ed 8	Q3	Picariello, Paul	24
Tech Ed 8	Q3	Picariello, Paul	23
Tech Ed 8	Q3	Picariello, Paul	23
Tech Ed 8	Q3	Picariello, Paul	23
Tech Ed 8	Q3	Picariello, Paul	19



August 27, 2018

Mr. Andrew Corey
Superintendent
SAU #41 Hollis Brookline
4 Lund Lane
Hollis, NH 03049

Re: Request for Proposals Architectural Services
Hollis Brookline High School Fee Proposal

BASIC SERVICES:

To clarify the architectural scope, we will do the following Base Services (Same design as 2017):

1. Attend the prebond hearing
2. Public Forum to review options

Basic Services Fee Estimates Based on Hourly Rates:

Base Services

Banwell Architects= \$2,000 (Hourly not to exceed)

Cost Estimator = \$500 (inflationary cost evaluation)

OPTION 1:

Option One Additional Services

- Locating the STEM Lab in the existing weight room
 - Building a 3,000 sf (to be determined) exercise area on the side of the main Gym
- A. Complete Structural and MEP reviews of the space
 - B. Provide options for community review
 - C. Attend additional meetings within reason to help educate the public
 - D. Development of final chosen option
 - E. 3d renderings of the option for PR purposes
 - F. Aid in developing pre bond flyer to be sent to public Monthly meetings with committee

Option 1 Fee Estimates Based on Hourly Rates:

Option One Services (increase over base)

Banwell Architects= \$4,000 (Hourly not to exceed)

Mechanical Electrical and Plumbing Engineering (MEP) = \$2,000

Civil Design= \$1,500 (Hourly not to exceed)

Cost Estimator = \$2,000

Structural Engineer review of infill for structural = \$2,000 (Hourly not to exceed)



Estimated Total = \$11,500
(Plus an allowance of \$2,000 for reimbursables)

Attached are our hourly rates and reimbursable sheets.

Sincerely,

A handwritten signature in black ink, appearing to read 'Ingrid Moulton Nichols', with a long horizontal line extending to the right.

Ingrid Moulton Nichols, AIA
Principal
LEED™ Accredited Professional



HOURLY RATES / FEES

2018

When the scope of services is difficult to determine in advance, and/or when flexibility is desirable to meet changing requirements, then the professional fees are determined on an hourly basis.

Hourly charges for professional services are:

Principal	\$170.00
Associate	130.00
Architect/Designer	120.00
Intern Architect	95.00
Administrative Staff	80.00

* Hourly Rates will be updated annually for all projects

REDUCTION IN SUPPORT STAFF WORK FORCE

When a reduction in staff is necessary, the Superintendent shall notify, in writing, the association president, specifying the details of the anticipated reduction. Every reasonable effort will be made to accomplish such reductions by attrition (retirements, resignations, and refusal to contract).

Within each job title of the respective Categories listed in Appendix A of the Support Staff Contract, the least senior employee shall be laid off first.

Seniority shall be defined as total years of employment in the Hollis Brookline Cooperative School District. Part-time employees shall accrue seniority on a pro-rated basis. Employees who are being laid off [or displaced] shall be given thirty (30) calendar days notice of lay-off.

Employees who are going to be laid off and who are qualified to fill vacant positions in other job titles shall have the right to apply for the positions and shall be given preference over outside applications if substantially equal.

Recall for Support Staff as listed in Appendix A and as noted in paragraph 2 of this policy shall be in reverse order of lay-off. A recalled staff member must signify his/her acceptance of recall within five (5) working days of receipt of notice, or forfeit said recall rights. Staff members who have been given other positions in the district to avoid lay-off shall have the right to return to their original positions. If they waive recall, all rights under this policy for that employee shall cease. Staff members shall retain recall rights for a period of 18 months from the date of lay-off. No new employee shall be hired in any vacant or new position while there are laid off employees substantially qualified to fill those positions.

1st Reading: July 20, 2006

2nd Reading: October 18, 2006

Adoption: October 18, 2006

Amended: January 24, 2007 and November 14, 2007

Amendments Adopted: November 14, 2007

Amended and Adopted: January 20, 2010

To become effective: July 1, 2010

1st Reading: August 15, 2018

2nd Reading: September 12, 2018

HEALTH EDUCATION AND EXEMPTION FROM INSTRUCTION

Consistent with Department of Education requirements, health and physical education, including instruction about parts of the body, reproduction, and related topics, will be included in the instructional program.

Instruction must be appropriate to grade level, course of study, and development of students and must occur in a systematic manner. The Superintendent will require that faculty members who present this instruction receive continuing in-service training, which includes appropriate teaching strategies and techniques.

Parents and legal guardians shall be notified by e-mail, other written means, website/social media posting, or phone call not less than two (2) weeks in advance of use of the curriculum course material to be used for instruction of human sexuality or human sexual education, that the material is available for inspection at the school. The notice will identify and provide contact information for the member of staff or faculty a parent or guardian should contact to arrange an opportunity to inspect the curriculum course material. The health and physical instruction materials will be made reasonably accessible to parents/guardians and others to the extent practicable.

Parents/guardians who wish to review or inspect health and physical education materials may arrange a meeting with the Principal to review the materials.

Parents/guardians who do not want their child to participate in a particular unit of health or sex education instruction may submit a request in writing to the building principal in accordance with Board Policy IGE.

~~Parents/guardians, or students over eighteen years of age, who do not want their child to participate in a particular unit of health or sex education instruction for religious reasons or religious objections, are allowed to have their child opt-out of such instruction.~~

~~Parents/guardians who wish to have their child opt-out of such instruction are required to complete the district opt-out form and state the particular unit of curriculum in which the student is not to participate. Any student who is exempted by request of the parent/guardian under this policy may be given an alternative assignment sufficient to meet state requirements for health education. The alternative assignment will be provided by the health or physical education teacher in conjunction with Principal.~~

~~Parents/guardians who do not want their child to participate in a particular unit of health or physical education for religious reasons must complete a Health or Physical Education Opt-Out Form. Opt-Out Forms are available from either the health education teacher or the Principal.~~

Opt-out requests must be submitted annually and are valid only for the school year in which they are submitted.

Legal References:

NH Code of Administrative Rules, Section Ed 306.40, Health Education Program
NH Code of Administrative Rules, Section Ed 306.41, Physical Education Program
RSA 186: 11, IX-b, Health and Sex Education

Adopted: February 18, 2009

1st Reading: January 17, 2018 (as amended)

2nd Reading: February 21, 2018

3rd Reading: September 12, 2018