

Hollis Brookline Cooperative School Board.  
Wednesday, July 22, 2020  
Hollis Brookline Middle School Multi-Purpose Room  
6:00

All times are estimates and subject to change without notice

- 6:00 Call to Order
  - Appointment of a process observer
  - Agenda adjustments
- 6:05 Approve meeting minutes (June 30, 2020)
  - Nominations/Resignations/Correspondence
- 6:10 Public Input
- 6:45 Discussion
  - Return to School Building Plan 2020-2021
  - Community Resolution on Racism
- 7:55 Non-public under RSA 91—A: 311 (a) Compensation and/or (c) Reputation
- 8:00 Motion to Adjourn



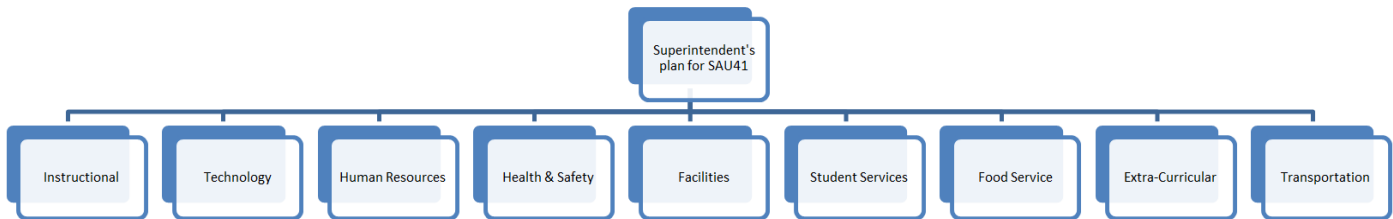
# SAU41

## Road Map to Reopening our School Buildings

The goal of SAU41 for the 2020-2021 school year is to ensure the continuity of educational opportunities for our students during the COVID-19 Pandemic.

All schools in SAU41 will resume onsite instruction for all students on September 3, 2020 while also providing an option for remote instruction for those families who choose. We understand that having children enter the school environment during the Covid-19 Pandemic is something that weighs heavily on many families. Therefore, returning to onsite instruction will be an individual family decision. Families that are not comfortable returning to an onsite school environment should contact their child's building principal to discuss possible remote options.

To develop a comprehensive return to school model, SAU41 created a task force of working groups comprised of more than 50 school district stakeholders.



The Task Force sent recommendations to the Superintendent for consideration. The Superintendent, along with SAU Administrators, met with the Community Advisory Group to review the recommendations. The result of that work is included below and will be presented to the three individual School Boards in July, 2020. The School Board members will deliberate and vote on the SAU41 Roadmap to Reopening our School Buildings. All plans are subject to change based on both the collaboration between administration and local education associations as well as new information available regarding the pandemic.



<b>Task Force Members</b>	
<b>Instructional</b>	Yolanda Flamino (Facilitator), Gina Bergskaug, Patricia Bouley, Greg Snoke, Jennifer Given, Michelle O'Brien, Shannon Dwyer, Ellen Lenczak, Carol Swanson
<b>Technology</b>	Candi Fowler (Facilitator), Carol Tyler, Rich Raymond, Amanda Zeller, Penny Currier, Maureen Lorden, Mark Meskell, Mary Albina
<b>Human Resources</b>	Paula Izbicki (Facilitator), Carrie Marsh, Jennifer Campbell, Nicole Tomaselli, Jill Robinson, Lisa Stone, Sheila Mandragouras, Christine Haight, Lynda Durkee
<b>Health &amp; Safety</b>	Dan Molinari (Facilitator), Bob Thompson, Bob Ouellette, Ellen Lenczak, Kelly Seeley, Kelly Ducharme, Tim Putnam, Erin White, Karin Pillion, Amanda Morin
<b>Facilities</b>	Rick Barnes (Facilitator), Kelly Seeley, Ed Hinckley, Ann Robinson, Lynn DiZazzo, Cathy Farwell, Chuck Stohl, Dawna Bosquet
<b>Student Services</b>	Lauren DiGennaro (Facilitator), Bob Thompson, Anne Elser, Amanda Morin, Jessica Visinski-Bumpus, Heidi Moore, Amber Fox-McNeil, Sandy VanSciver, Claire Actis
<b>Food Service</b>	Tim Girzone (Facilitator), Amy Cassidy, Lin Ilingworth, Caryn Miller, Stacie Sanborn, Sam Boudreau, Inger Walega
<b>Extra-Curricular</b>	Brian Bumpus (Facilitator), Tim Girzone, Allie Buschmann, Matt Barbosa, Bob Pooler, Lynne Ouellette
<b>Transportation</b>	Andy Corey, Bob Thompson, Gina Bergskaug in conjunction with STA

<b>Community Advisory Group</b>	
<b>Ben Garber, PhD</b>	<b>Lisbeth Murphy, MD</b>
<b>Christina Haag, AANP</b>	<b>Marie Ramas, MD, FAAFP</b>
<b>Rebecca Howie, PT, MS</b>	<b>Beth Williams, AANP</b>
<b>Bernard Mizula, MS, CIH, CIT, CHS-IV, RPIH</b>	

---

### Guiding Resources

- American Academy of Pediatrics (AAP)

- Center for Disease Control (CDC)
  - Environmental Protection Agency (EPA)
  - Learning Policy Institute (LPI)
  - National Association of School Nurses (NASN)
  - National Council on School Facilities (NCSF)
  - New Hampshire Grades K-12 Back-To-School Guidance
  - New Hampshire School Nurses Association (NHSNA)
  - Occupational Safety and Health Administration (OSHA)
- 

## **Health and Safety**

- Parents will be responsible for completing a brief daily symptom monitoring assessment for each of their children prior to the start of each school day. Parents are asked to contact the school should their child have any of the identified symptoms.
- Targeted temperature checks will be taken by the school nurse or their designee for any student who accesses the health office or is returning from a day of absence.
- All students returning from an absence must receive clearance to return to school from either a medical provider or the school nurse. Students should not ride the bus on the morning of their return and should report to the nurse's office with a parent/guardian immediately upon arrival.
- Both students and staff will be required to wear a face-covering when physical distancing guidelines, as determined by the Center for Disease Control (CDC), are not able to be achieved.
- Students in grade preK-3 are strongly recommended to wear a face-covering but will not be required.
- All students will be required to wear a face-covering when: riding the bus, entering/exiting the building, arriving to/leaving a classroom, engaging in small group classroom activities, and walking in the hallways and other common areas as determined by the building principal.
- Students with specific health and disabling conditions will not be required to wear a mask.
- Face-coverings will be provided for any staff or student who is unable to obtain their own.
- Each school will create staggered dismissal times to significantly reduce the number of students in the hallway.
- Whenever possible, student movement will be reduced by having teachers rotate from classroom to classroom.
- Hand sanitizer and sanitizing wipes will be available for student use in all classrooms and common areas.

## **Instructional**

- Extensive time will be spent at the beginning of the year reviewing previous grade level material and developing plans for the differentiation of instruction to meet students at their level.
- Teachers will use their collaboration time during Professional Learning Communities (PLC) meetings to discuss individual student needs with previous school year's teachers.
- Each school will develop procedures for enhancing their academic remediation program for students who need to increase their rate of progress
- Teachers will use a variety of both formal and informal assessment tools to determine each student's present level of performance.
- In the opening days of school students will be provided direct instruction in personal and public health measures.
- All students will have assigned seats in their classroom.
- Teachers are strongly encouraged, when appropriate, to move classroom activities to the outdoors.
- Students will not share instructional materials and shared instructional spaces (i.e. computer labs) will be closed to full class access until further notice.
- Elementary specials will take place within the homeroom classroom.

### For Remote Learning

- If there is a need to transition to remote learning or remote learning is the primary mode of education, direct instruction will follow the in-person instruction model in regard to the schedule and expectations for learning.
- Daily live lessons on Zoom are required for attendance purposes with screen time recommendations based on student age.
- The school day will have consistent structure and parameters for participation in instruction, learning, and homework.
- Specific expectations for learning will be shared by each classroom teacher, and they will include policies regarding assignment due dates and times.
- Elementary specials are required and will take place remotely.

### Technology

- All students will have access to their own Chromebook/laptop to prevent the sharing of devices. Families who do not have access to technology will be loaned a Chromebook from their child's school.
- Students will be responsible for ensuring that their device comes to school fully charged.

- Students and families will be provided guidance documents and/or videos to help navigate digital tools.

## **Human Resources**

- School volunteering will be prohibited except in critical need areas.
- All school staff will receive professional development training in evidence-based public health practices.
- Teachers will receive additional professional development training in the use of digital learning tools.
- An additional school nurse is currently being hired. This individual will provide on call support to each of the six schools within SAU41.
- Custodial responsibilities will be adjusted to include increased emphasis on deep cleaning and sanitizing. Custodians will receive additional professional development training to ensure all work meets the minimum standard.
- Out of state professional development for teachers will be prohibited

## **Facilities**

- Health offices will be expanded in all SAU41 schools to include one location for routine visits and a separate location for potentially symptomatic students.
- Some common areas such as school computer labs will be shut down.
- Students will not have access to a locker for their personal items. Every attempt will be made to reduce the number of items that students will need to carry while in school.
- Excess furniture will be removed from classrooms to maximize physical distancing.
- To the greatest extent possible, all classroom windows and doors will remain open during the instructional day.
- SAU41 has hired an independent consulting group to evaluate and make recommendations regarding the heating, ventilation, and air conditioning (HVAC) systems of all schools.
- Health and safety enhancements will continue to be made at each school building. This includes the retrofitting of touchless bathroom fixtures and contactless water bottle filling stations, when able.
- Hand sanitizing stations will be established throughout each of the buildings, including the classrooms.

## **Student Services**

- Students who are not able to return to the physical school environment will be provided an educational program through a remote environment.

- Students at all schools will be provided increased time for socialization during the school day. This will include increased recess time and morning meeting times at the elementary schools, increased ROCK time at middle school, and increased Cavblock time at the high school.
- Each school will implement a developmentally appropriate action plan for addressing the social/emotional needs of their students.
- IEP, 504, and parent requested student progress meetings will continue to be held remotely.
- Staff will receive training in the research based program Mental Health First Aid.

## **Food Service**

- Students who require breakfast and/or lunch through the school lunch program will be provided with a grab and go lunch option. This option will be available to students engaged in remote learning as well.
- Food service will utilize a cashless purchase model. All purchases will need to be completed through a student's digital account.
- Due to physical distancing guidelines a limited number of students will be able to eat in the cafeteria which will require the use of both classroom and outdoor spaces for breakfast/lunch.
- Shared food items such as items donated by parents for classroom celebrations will be prohibited.
- Concessions at sporting events will be suspended until further notice.

## **Extra Curricular**

- Guidelines regarding student participation in athletics will be developed in accordance with the New Hampshire Interscholastic Athletic Association (NHIAA).
- Student athletes will be required to have their temperature checked daily prior to the start of their participation in an after school activity.
- Students will not be required to wear a mask when engaged in rigorous physical activity.
- Student athletes will be asked to bring their own water from home or use one of the touchless water bottle filling stations. Community water will not be available.
- Attendance by the public at all athletic events will be limited and determined by the Athletic Coordinator.
- Children will be brought to parent/guardian vehicles upon dismissal from extracurricular activities.
- Visiting teams will not have access to the locker rooms for changing and should come prepared to play.

- When appropriate, meetings and rehearsals for clubs and activities will be offered remotely. When in-person meetings are approved, a consistent roster will be required and students will be brought to parent/guardian vehicles upon dismissal.
- Facility use by outside organizations will be limited and will require approval by the superintendent's office.
- Overnight school sponsored student group travel, including athletics and field trips, are suspended until further notice.

## **Transportation**

- Because physical distancing is difficult to maintain on a school bus, parents are strongly encouraged to drive their child to school.
- All students riding the bus will be required to wear a face-covering. Those students who do not have a face-covering will be provided one prior to loading the bus.
- Students will be asked to use hand-sanitizer prior to loading the bus, and it will be available on the bus.
- Students will be assigned a seat and when applicable, students will sit with siblings.
- All bus windows will remain open, until further notice, to promote the circulation of fresh air.
- Buses will be sanitized after both the morning and afternoon runs, utilizing enhanced cleaning procedures.



## Hollis-Brookline Non-discrimination and Equity Initiative

Whereas, The American Academy of Pediatrics and the [American Academy of Family Physicians](#) declares that institutionalized racism is a public health crisis;

Whereas, Adverse Childhood Events are known causes of limited educational development amongst children;

Whereas, the effects of structuralized racism is a known [Adverse Childhood Event](#);

Whereas, The [National School Board Association](#) states "We affirm in our actions that each student can, will, and shall learn. We recognize that based on factors including but not limited to disability, race, ethnicity, and socio-economic status, students are deprived of equitable educational opportunities. Educational equity is the intentional allocation of resources, instruction, and opportunities according to need, requiring that discriminatory practices, prejudices, and beliefs be identified and eradicated."

Whereas, the district is committed to nondiscrimination;

Whereas, Hollis-Brookline is an inclusive community;

Whereas, the district recognizes that issues of race, equity and inclusion affect all members of the Hollis-Brookline community regardless of their background;

Whereas, [Racial justice](#) is the systematic fair treatment of people of all races, resulting in equitable opportunities and outcomes for all.

Whereas policy does not currently exist that explicitly addresses equity, diversity and inclusion.

Therefore, may it be resolved that:

1. The SAU #41 school districts will make anti-racism and equity a strategic priority and denounce all forms of institutionalized racism by supporting diversity, equity, and inclusion efforts.
2. SAU #41 will render services from an outside consultant, approved by the boards, to evaluate and advise district administration and educators on their policies, practices, and procedures relative to race equity and inclusion.
3. Based on the consultation recommendations, the SAU #41 school districts will develop and release a plan to address the findings. These actions may include professional development, draft new or edit existing policies and procedures, and curriculum review etc.

